



First Floor Left 23 Guildford Street
Millport, Isle of Cumbrae, KA28 0AB

Offers over £120,000



First Floor Left 23 Guildford Millport, Isle of Cumbrae, KA28 0AB

23 Guildford Street (First Floor Flat Left),
Millport KA28 0AB, Isle of Cumbrae

Price: Offers Over £ 120,000

New to the market this bright, spacious Seafront first floor flat within a traditional red sandstone tenement on the main street in the popular seaside town of Millport has extensive sea views over the Town, The Eileans, Newton Beach to Marine Parade and Wee Cumbrae. The flat comprises entrance hallway, bright double glazed bay windowed lounge overlooking the sea front with recessed kitchen area to rear, 2 double bedrooms, one with en-suite shower room and main bathroom with storage and shower cubicle. The property benefits from original attractive corning/coving and ceiling rose, double glazed windows and is in a prime position on the seafront and Town amenities. The property offers an ideal home for the first-time buyer/holiday home/buy to let market. Viewing highly recommended. EPC Band D. Council Tax Band A.

Hallway

9'6" x 7'9" (at widest) (2.90m x 2.36m (at widest))

Lounge / Kitchen

17'14" x 11'7" (5.18m x 3.53m)

Bedroom 1

7'25" x 15'66" (2.13m x 4.57m)

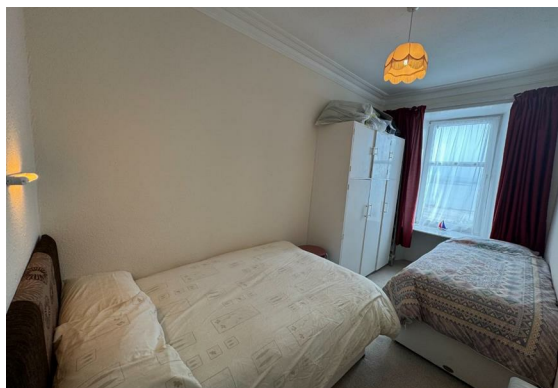
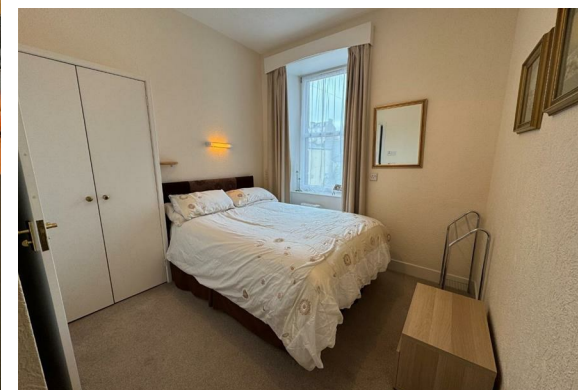
Bedroom 2 with en suite

13'55" x 9'8" (3.96m x 2.95m)

Main Bathroom

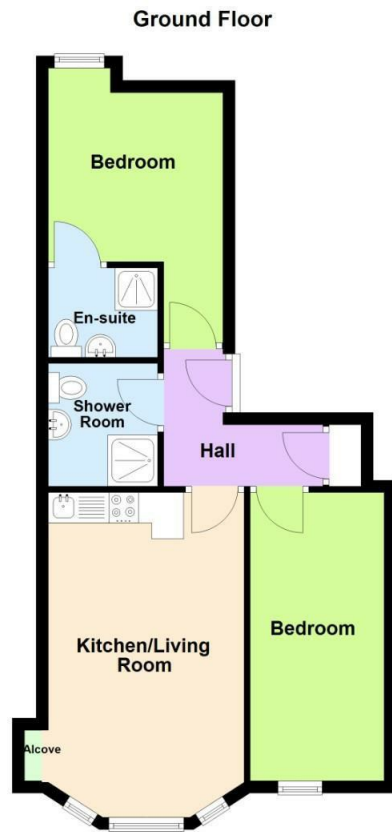
6'0" x 6'56" (1.83m x 1.83m)

Gardens and Outbuildings





Floor Plan



Viewing

Please contact our Largs Office on 01475673663 if you wish to arrange a viewing appointment for this property or require further information.

These particulars, whilst believed to be accurate are set out as a general outline only for guidance and do not constitute any part of an offer or contract. Intending purchasers should not rely on them as statements of representation of fact, but must satisfy themselves by inspection or otherwise as to their accuracy. No person in this firm's employment has the authority to make or give any representation or warranty in respect of the property.

Area Map



Energy Efficiency Graph

